

# WEEKLY EQUITY REPORT

3<sup>rd</sup> December, 2018



## INDIAN MARKET AS ON FRIDAY

**30/11/2018**

Index	Current Value	Prev. Week Closing	% Change
<b>Nifty 50</b>	10,876.75	10,526.75	<b>+3.32%</b>
<b>Sensex</b>	36,194.30	34,981.02	<b>+3.46%</b>

## WORLD INDICES

### US, EUROPEAN & ASIAN MARKETS

ZONE	INDEX	RATE	% CHANGE
ASIAN	SGX NIFTY	10912.50	+0.02%
	NIKKEI 225	22351.06	+0.40%
	SHANGHAI	2588.19	+0.80%
	HANG SENG	26506.75	+0.21%
AMERICAN	DOW JONES	25538.46	+0.79%
	NASDAQ	7330.54	+0.78%
EUROPEAN	FTSE	6980.24	-0.84%
	CAC	5003.92	-0.05%
	DAX	11257.24	-0.36%

## TOP GAINERS OF THE WEEK

Company Name	Current Value	Prev. Close	% change
TCS	1968.25	1812.55	8.59
INFY	667.45	620.75	7.52
INDUSINDBK	1631.80	1528.85	6.73
BAJFINANCE	2537.70	2381.50	6.56
ZEEL	488.6	458.85	6.48

## TOP LOSERS OF THE WEEK

Company Name	Current Value	Prev. Close	% change
YESBANK	169.80	195.55	13.17
ONGC	140.30	152.25	7.85
SUNPHARMA	492.60	525.95	6.34
TATAMOTORS	171.95	182.55	5.81
COALINDIA	244.90	256.65	4.58

## TOP NEWS OF THE WEEK

- Aviation ministry to FinMin: Allow GST on ATF, uniformity in input tax credit.
  - TRAI's Do-Not-Disturb app makes quiet entry into Apple store.
  - UIDAI asks banks not to discontinue Aadhaar payment system.
  - Oil drops; losses limited by hopes of OPEC, Russia output cut.
  - Bitcoin bears: As the cryptocurrency tanks, these experts are having the last laugh.
- 
- Whistle-blower complains to SEBI against Sun Pharma, alleges insider trading: Report.
  - Bank unions reject IBA's 8% wage hike offer.
  - Amul gains edge over Mother Dairy in race to run Delhi Milk Scheme.
  - Saudi Arabia ready to help India to meet its growing energy demands: Prince to PM Narendra Modi.
  - Indian coal based power plants are the fifth most profitable globally, 42% of world's coal power stations run at loss: Report.
  - Indian Oil reduces subsidised LPG cylinder price by Rs 6.5, non-subsidised by Rs 133.
  - India needs a GST like federal structure for healthcare and education: Finance Minister Arun Jaitley.
  - Wipro aims to make \$150 million from intellectual property this FY.
  - BSNL employee unions allege govt patronising Reliance Jio; plan indefinite strike from December 3.

## DATA OF THE WEEK

Data	Actual	Previous
Govt Budget Value Oct	INR -6490B	INR -5947B
GDP Growth Rate YoY Q3	7.1 %	8.2%
Infrastructure Output YoY Oct	4.8%	4.3%

## UPCOMING DATA

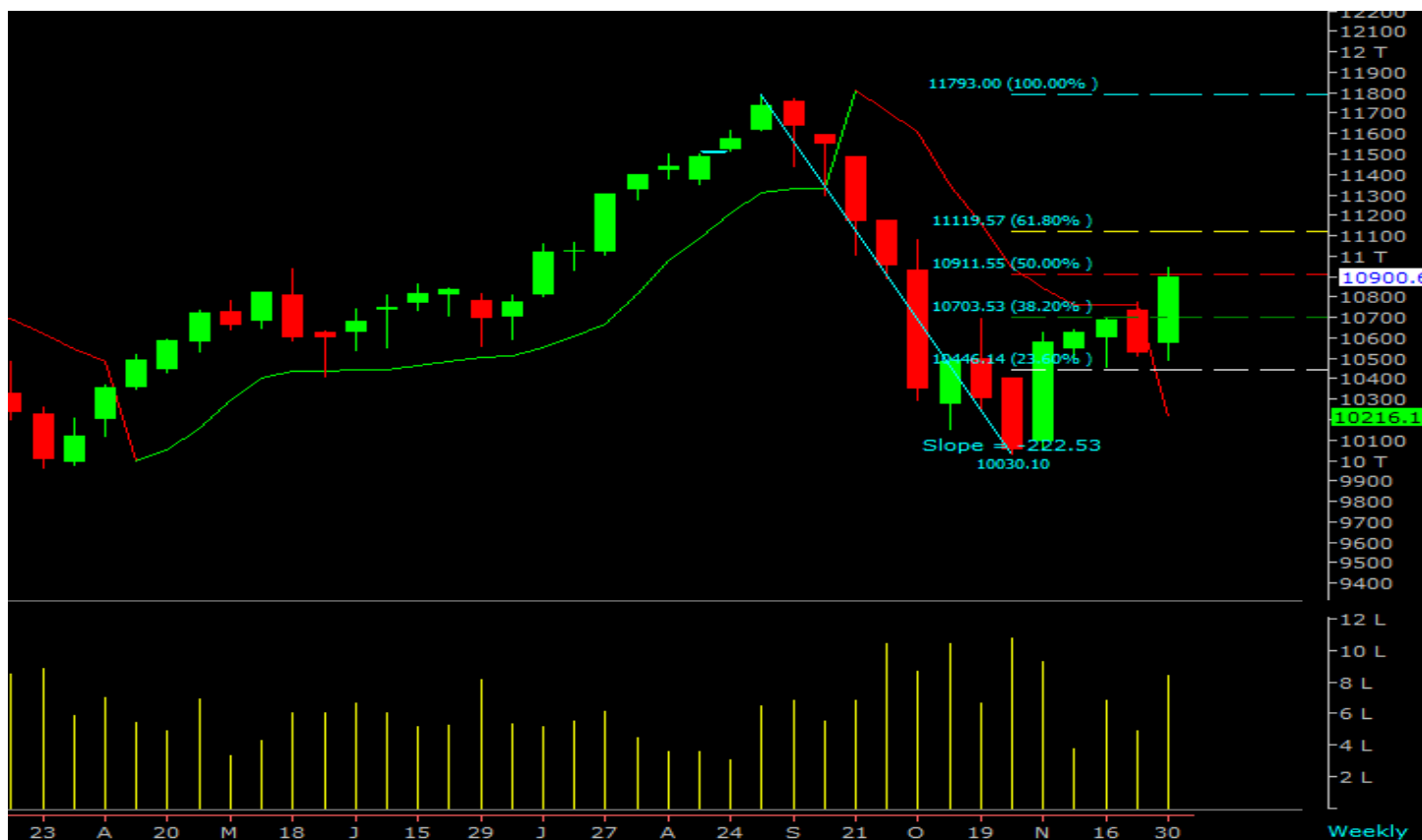
Data	Previous	Forecast
Cash Reserve Ratio	4%	4%
RBI Repo Rate	6.5%	6.5%

## ADVICE ON NIFTY

**Trend:** Bullish Reversal

**Recommendation:** Buy on dip @ 10703 - 10719

**Targets:** 10844 – 11007



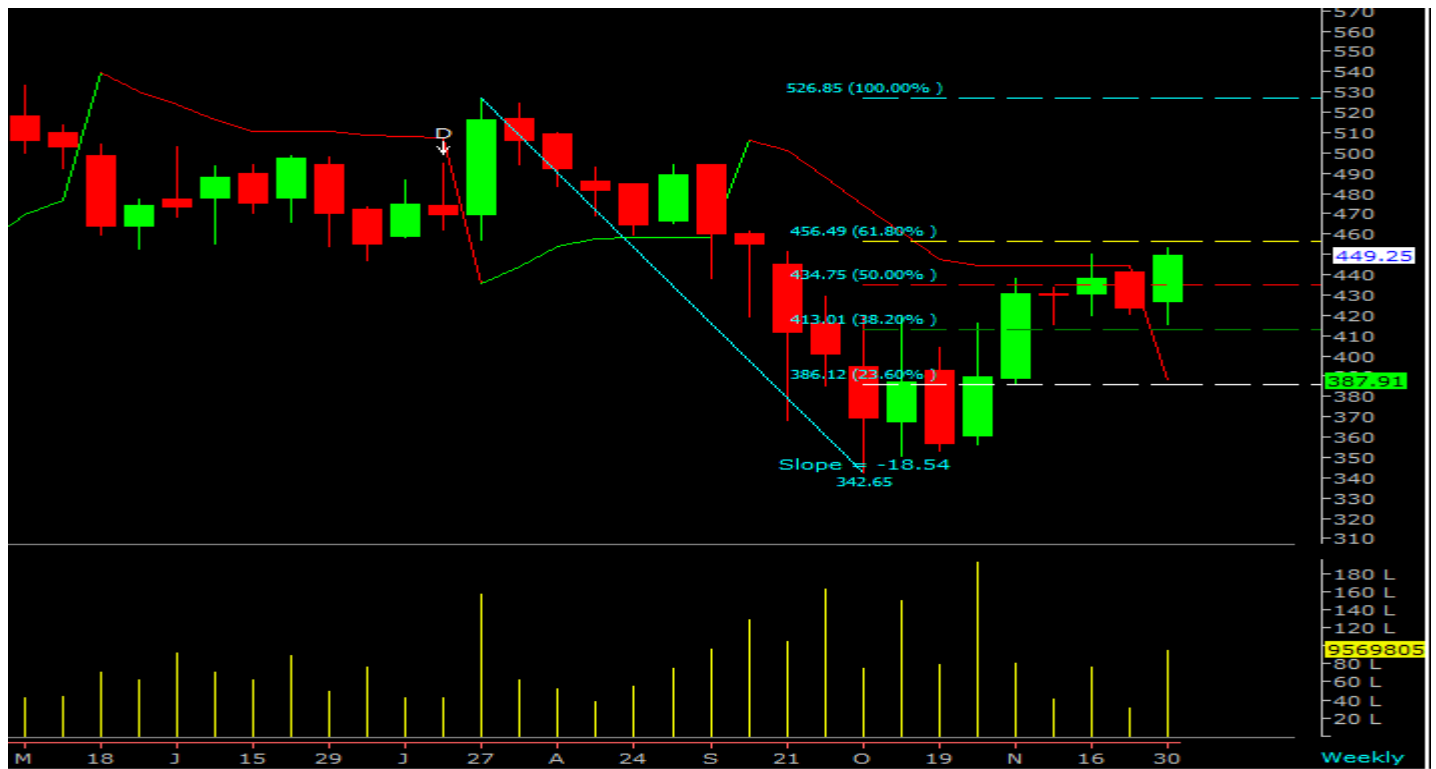
## STOCK OF THE WEEK

**Symbol:** M&MFIN (Mah. & Mah. Financial Services Ltd)

**Trend:** Bullish Reversal

**Recommendation:** Buy on dip @ 434.75 – 435.50

**Targets :** 456.90 – 491.15





## PREV. SUGGESTION

Date	Scrip	Reco.	Rate	Tgt	% Change
20-Aug-18	CAPF	Buy	628.00	647.00	+3.02%
20-Aug-18	NIFTY	Buy	11510	11622	+0.97%
03-Oct-18	NIFTY	Sell	11038	10784	-2.30%
03-Oct-18	SBIN FUT	Sell	271.20	258.35	-4.73%
15-Oct-18	NIFTY	Sell	10588	10298	-2.73%
15-Oct-18	INFIBEAM FUT	Sell	54.55	50.45	-7.51%
22-Oct-18	NIFTY	Sell	10405	10030	-3.60%
22-Oct-18	INFY FUT	Sell	680.00	644.25	-5.25%
05-Nov-18	NIFTY	Buy	10450	10893	+4.24%
19-Nov-18	KAJARIACER	Buy	440	462	+5.00%



## DISCLAIMER

This document is solely for the personal information of the intended recipient and must not be exceptionally used as the basis for any investment decision. Nothing in this document should be construed as investment, Legal, taxation or financial advice. Victory Terminal financial services is not soliciting any action based upon it. Each recipient of this document should make necessary investigations as they consider important to arrive at an independent evaluation of an investment in the securities of the companies referred to in this document (including the merits and risks involved). This report has been made based on information that we consider reliable and are publicly available but we do not state that it is accurate or complete and it should not be solely relied upon such, as this document is for Victory Terminal financial services, its affiliates, directors, its proprietary trading and investment businesses may, from time to time, make investment decisions that are inconsistent with or contradictory to the recommendations expressed herein. The views contained in this document are those of the analyst, and the company may or may not subscribe to all the views expressed within this document. Victory Terminal financial services or employees shall not be in any way held responsible for any loss or damage that may arise to any person from any inadvertent error in the information contained in this report.

Victory Terminal financial services have not independently verified the information contained in this document. Accordingly, we cannot testify, nor make any representation or warranty, express or implied, to the accuracy, contents or data contained within this document. This document is being supplied to you solely for your information, and its contents, information or data may not be reproduced, redistributed or passed on, directly or indirectly.

“INVESTMENT IS SUBJECT TO MARKET RISK.”

.....

**INFO@VICTORYTERMINAL.COM**